

Electrical Characteristics

Module Type	P6-60-280	P6-60-285	P6-60-290
	STC	STC	STC
Maximum Power at STC (Pmp)	280	285	290
Open Circuit Voltage (Voc)	39.3	39.5	39.6
Short Circuit Current (Isc)	9.45	9.59	9.73
Maximum Power Voltage (Vmp)	31.4	31.5	31.6
Maximum Power Current (Imp)	8.92	9.05	9.18
Module Efficiency at STC(ηm)	17.2	17.5	17.8
Power Tolerance	(0,+4.99)		
Maximum System Voltage	1000 VDC		
Maximum Series Fuse Rating	20A		

STC: Irradiance 1000 W/m² module temperature 25°C AM=1.5;

Temperature Characteristics

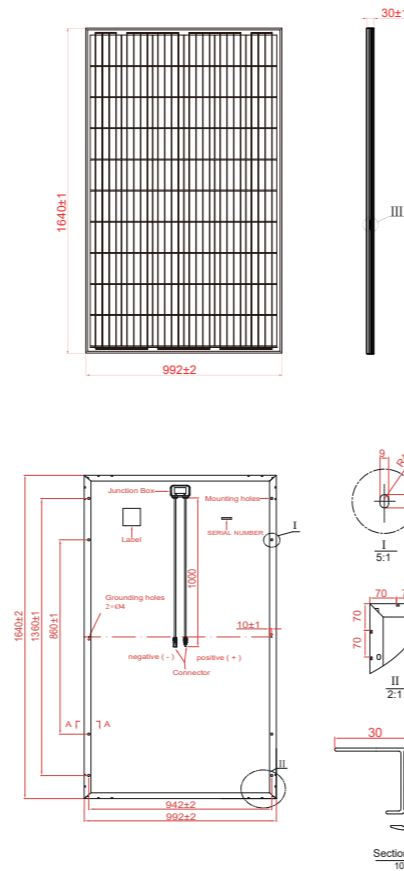
Pmax Temperature Coefficient	-0.36 %/°C
Voc Temperature Coefficient	-0.28 %/°C
Isc Temperature Coefficient	+0.05 %/°C
Operating Temperature	-40~+85 °C
Nominal Operating Cell Temperature(NOCT)	45±2 °C
Fire Rating	Class C

Mechanical Specifications

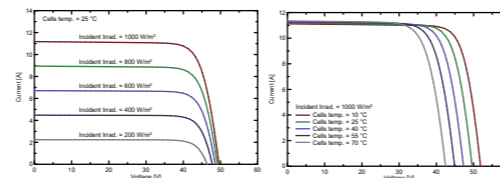
External Dimensions	1640 x 992 x 30 mm
Weight	18.2kg
Solar Cells	Poly 5BB 157x157mm (60pcs)
Front Glass	3.2 mm AR coating tempered glass, low iron
Frame	Anodized aluminium alloy
Junction Box	IP68,3 diodes
Output Cables	4.0 mm ² ,Portrait:900mm or Customized Length
Connector	Genuine MC4 Connector /Compatible MC4 Connector
Mechanical Load	Front side 5400Pa/ Rear side 2400Pa

Packing Configuration

	1640 x 992 x 30 mm
Container	40'HQ
Pieces per Pallet	36+36+7
Pallets per Container	14
Pieces per Container	1106



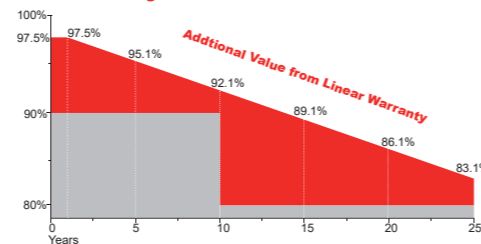
I-V Curve



Product Certificates



Warranty



10 YEARS Guarantee on product material and workmanship | **25 YEARS** linear power output warranty

Made in China



P6-60-280-290W